

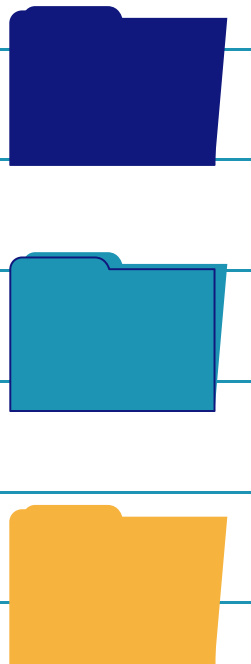
 — DigiWork

INFOPACK

TC FOR YOUTH WORKERS

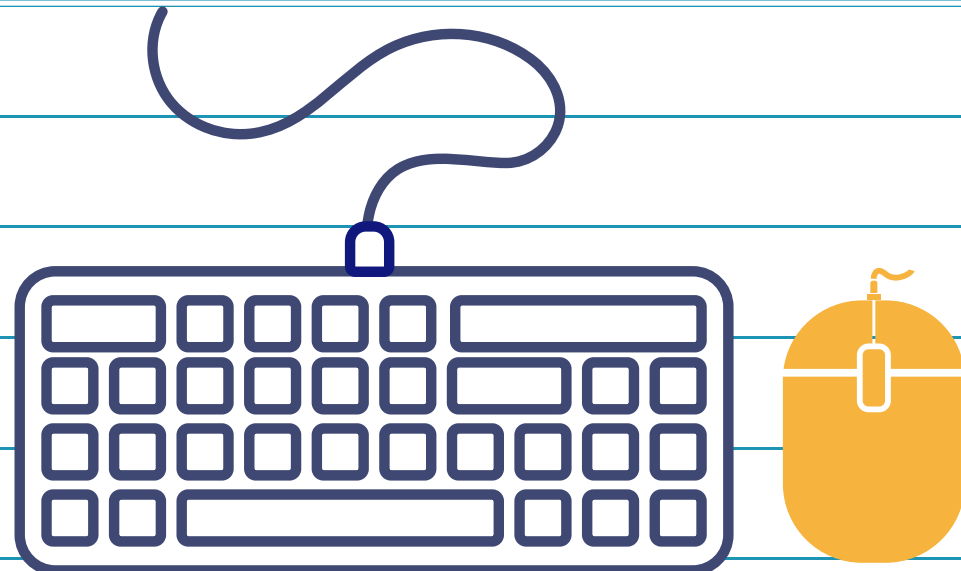
DIGIWORK

 DigiWork 





CONTENT

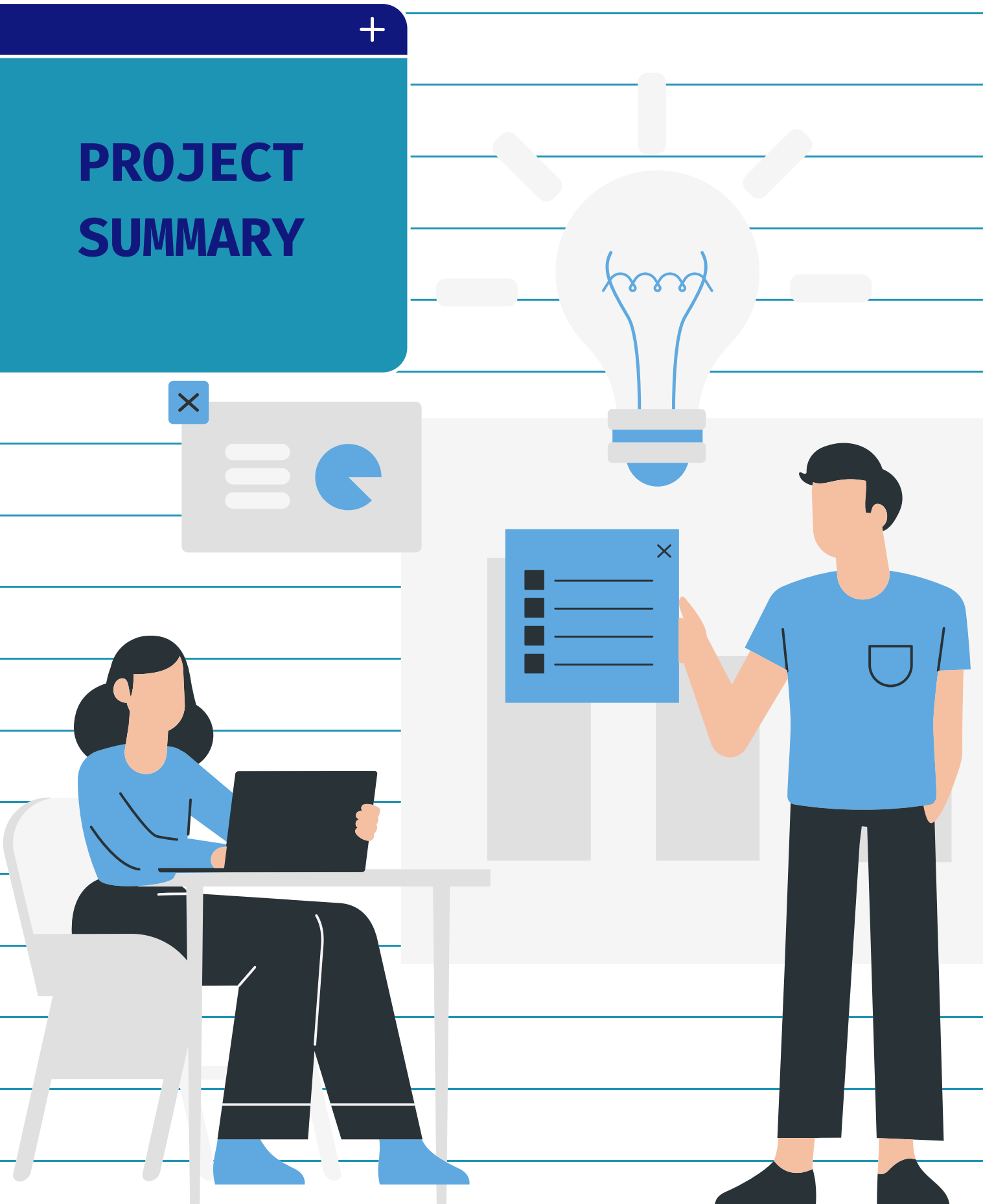


- 01. PROJECT SUMMARY
- 02. DATES
- 03. DAILY ORGANISATION
- 04. PARTICIPANTS
- 05. TRAVEL
- 06. TRAVEL COST
- 07. REIMBURSEMENTS
- 08. FACILITY
- 09. WHAT TO BRING
- 10. CONTACT US





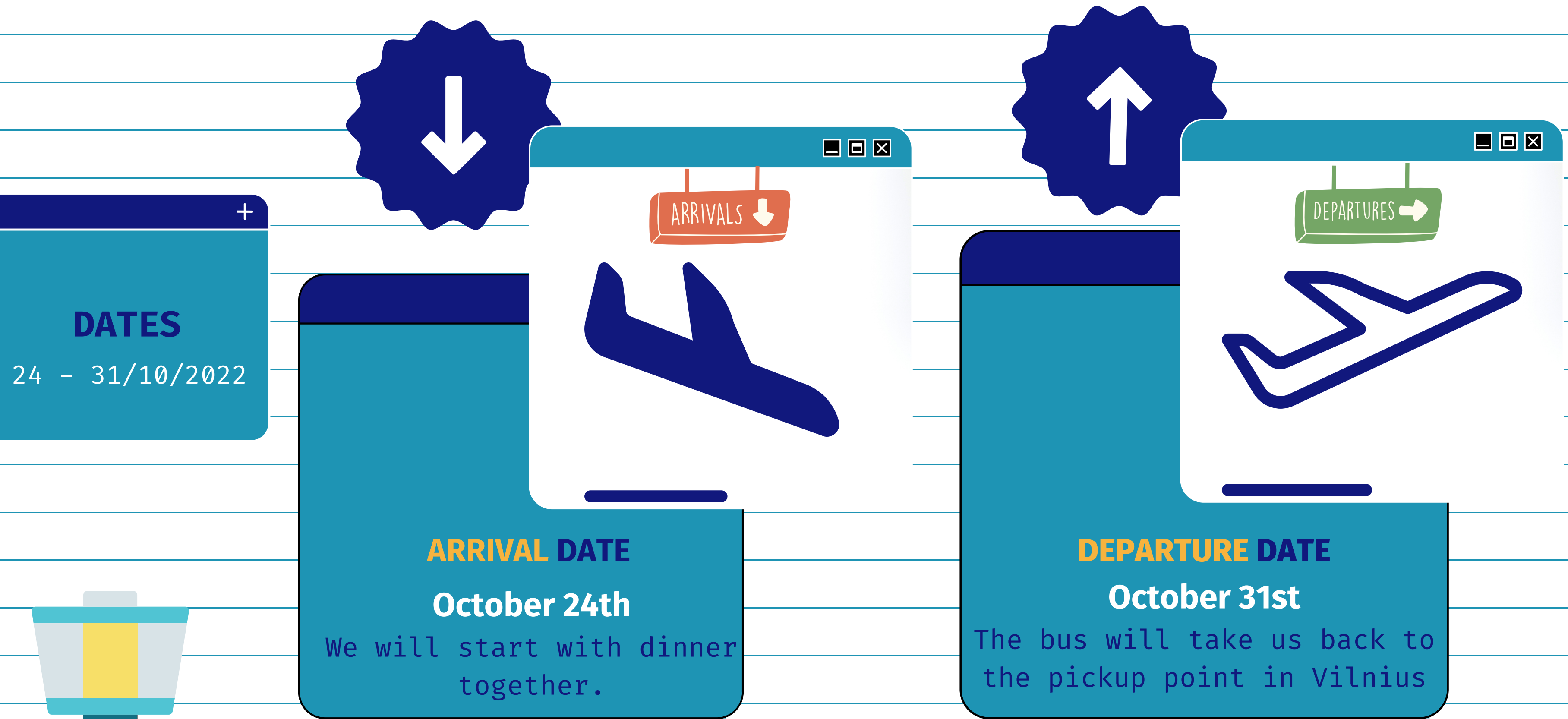
PROJECT SUMMARY



✕ 📄 — digiwork

DigiWork is a training course that will help youth workers overcome online and technical obstacles by providing guidance and practical experience on how to transfer the youth work online.

On a project, we will provide innovation in distance learning and an effective alternative path to wider opportunities for non-formal learning. We will improve the digital competencies and skills of youth workers, enhance the capacity of the youth workers and organizations in their support for young people, and encourage quality improvements in youth work.



- You have 3 travel days before and 3 travel days after the project



+

DAILY ORGANISATION

BREAKFAST

SESSION 1

SESSION 2

LUNCH BREAK

SESSION 3

SESSION 4

DINNER

EVENING PROGRAM





Some of the evenings will be intercultural nights. You are more than welcome to **bring anything that represents your country the best.**

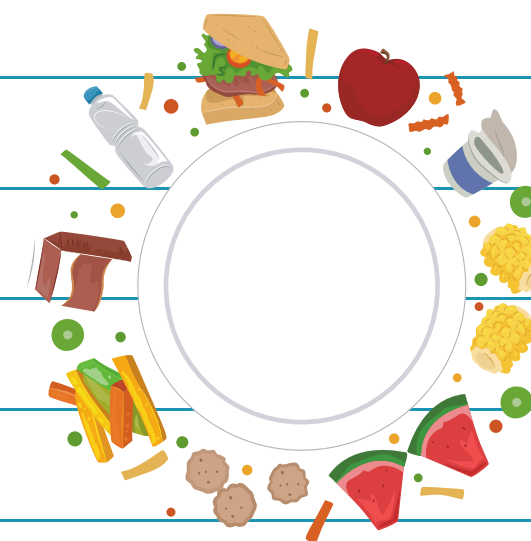
INTERCULTURAL NIGHTS

24 - 31/10/2022

DANCES



FOOD



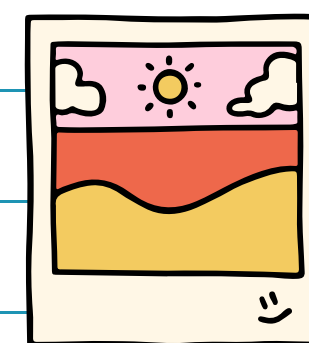
GAMES



MUSIC



STORIES



PICTURES



There will be 28 youth workers on board.

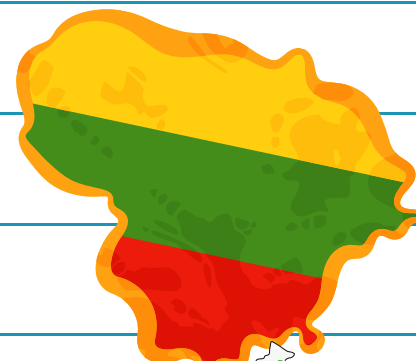
+

PARTICIPANTS



3

LITHUANIA



2

BULGARIA



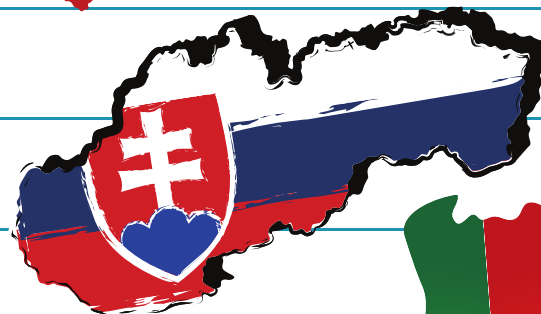
2

SPAIN



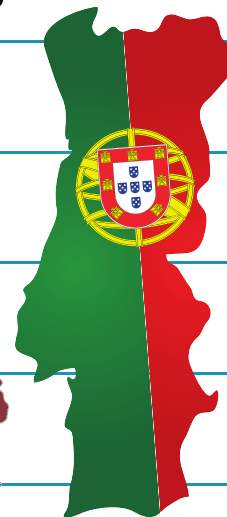
2

SLOVAKIA



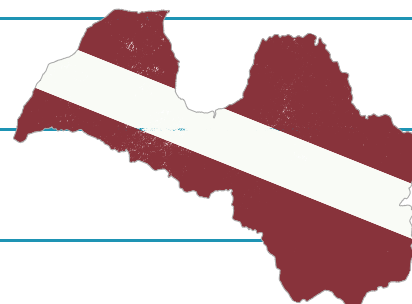
2

PORTUGAL



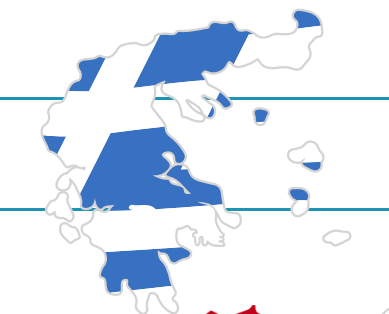
2

LATVIA



2

GREECE



4

NORTH MACEDONIA



2

CYPRUS



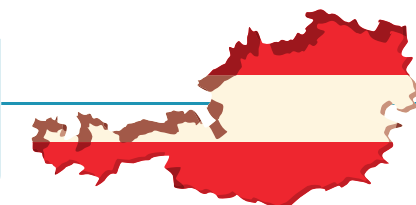
2

TURKEY



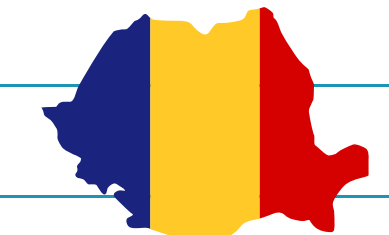
3

AUSTRIA



2

ROMANIA





TRAVEL

24 - 31/10/2022



HOW TO GET TO LITHUANIA

VILNIUS AIRPORT

Coming to Vilnius airport is the best way. The airport is close to the city center the connections to the city are going frequently. Taxi will not be reimbursed !

KAUNAS AIRPORT

From Kaunas, you will need to take the train or bus back to Vilnius.

RIGA AIRPORT

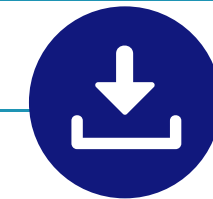
Riga airport is also close. From Riga, you can take a bus.



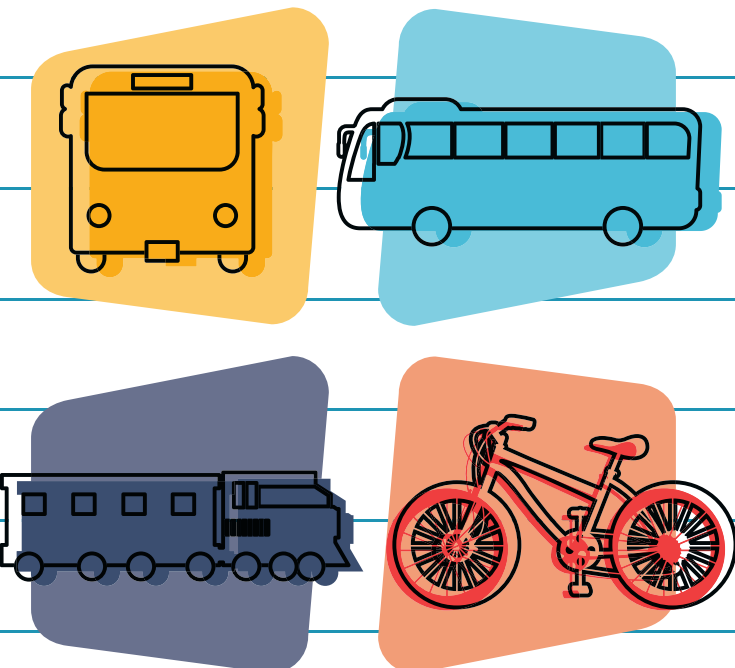
According to ERASMUS+ program rules, we will reimburse the travel costs on the basis of most economic options (second class, railway tickets etc.)

HOW TO REACH THE VENUE

We will reach the venue all together from Vilnius by private bus. More information about the pick-up time and meeting point will be provided later.



For public transport use Trafi:
<https://web.trafi.com/lt/vilnius>



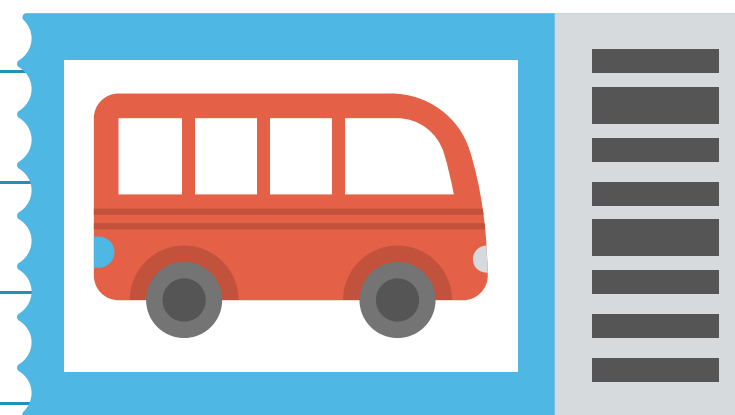


! Travel budget is calculated according to distance calculator - <https://erasmus-plus.ec.europa.eu/resources-and-tools/distance-calculator>

	country	budget per person	country	budget per person
<div><div>+</div><div>TRAVEL COSTS</div><div></div></div>	LITHUANIA	0 €	GREECE	275 €
	BULGARIA	275 €	NORTH MACEDONIA	275 €
<div>All travel proposals needs to be sent to the hosting organization till the 15th of September on umunthuprojects@gmail.com</div>	SPAIN	360 €	CYPRUS	360 €
	SLOVAKIA	275 €	TURKEY	360 €
<div><div>NOTICE</div><div>From each participant's budget, approximately 30 € will be deducted for the bus to and from the venue.</div></div>	PORTUGAL	360 - 820 €	AUSTRIA	275 €
	LATVIA	180 €	ROMANIA	275 €



TICKETS



INVOICES & CONFIRMATIONS



Each participant needs to keep all the tickets and boarding passes for reimbursements - online, and if you will get any paper tickets - keep them and make a picture of them.

We need all invoices and emails confirming the purchase of any kind of tickets, test, visa, etc. Keep everything in pdfs online.

REIMBURSEMENTS

24 - 31/10/2022



RYANAIR



Keep in mind that Ryanair boarding passes will not be visible on the app/web after the flight. We need a whole boarding pass - not just a screenshot. Please download all the boarding passes and tickets in pdf before the flight.

FOR REIMBURSEMENTS WE NEED

According to Erasmus+ rules, we must keep all the invoices, flight tickets, boarding passes for correct financial reporting of the activities.

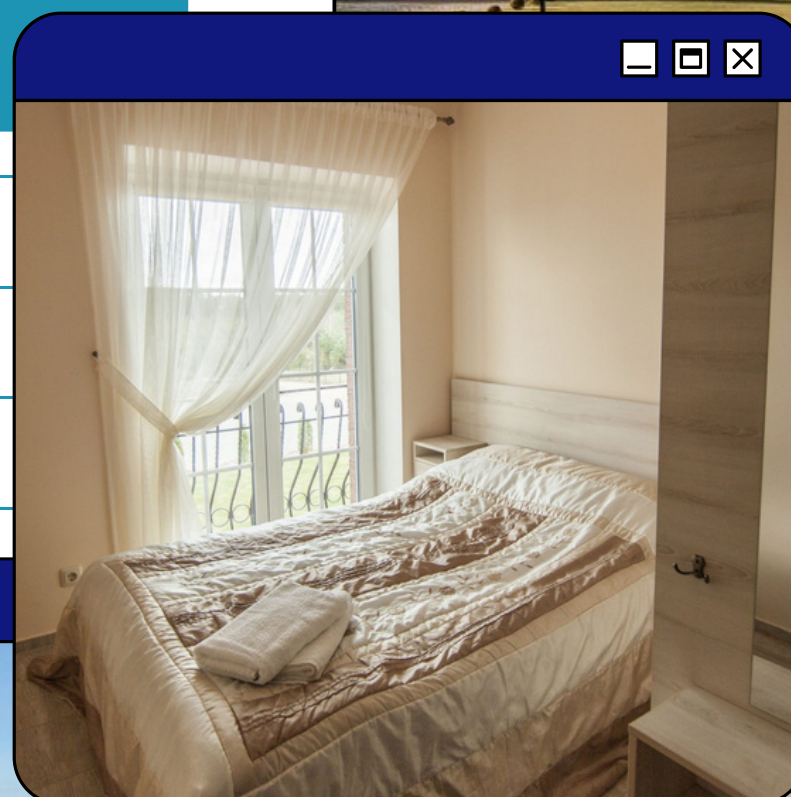
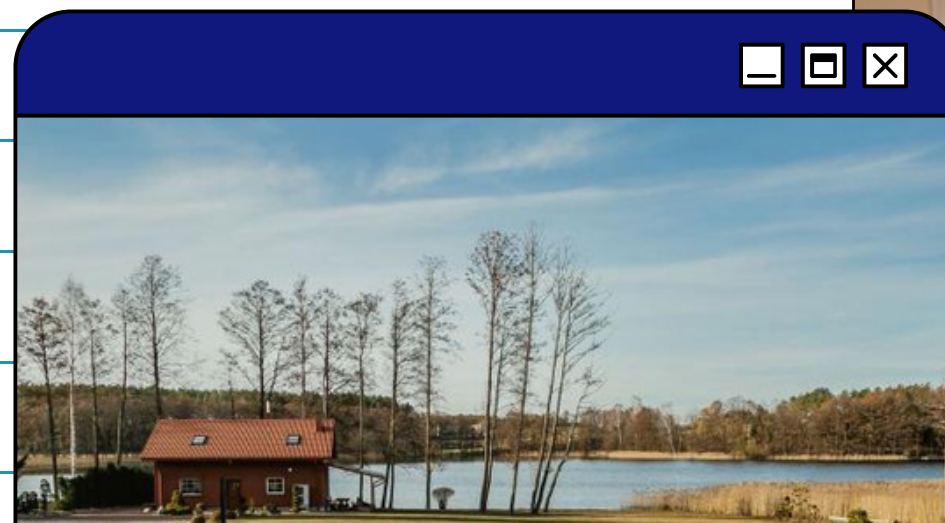
You need to attend to all the activities of the training course to get the refund.





FACILITY

24 - 31/10/2022



LA VILLA ROYALE

During the project, we will stay in the beautiful venue la Villa Royale

website: <https://www.lavillaroyale.lt/>

The venue is surrounded by amazing nature. Each room has its own bathroom. Participants will be divided into rooms of 3 by gender.

If you have extra proposals - let us know
umunthuprojects @ gmail.com



PERSONAL DOCUMENTS

PASSPORTS



VISA



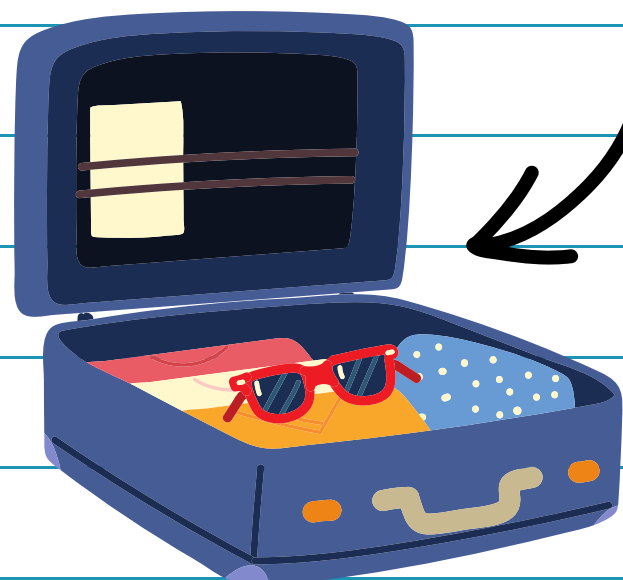
INSURANCE



CURRENCY



WHAT TO BRING



To enter Lithuania, you need a **valid identity document** (passport or identity card).

If you need a Visa, make sure you apply for it as soon as possible - it can take a long time. If you need an invitation or confirmation letter from uMmunthu please let us know by mail on umunthuprojects@gmail.com

As a member of the European Union, Lithuania has agreements for the recognition of insurance systems. **Please bring this card with you. Organizations from Turkey and North Macedonia must ensure that their participants have issued appropriate medical insurance** valid on the dates of the training course and travel days. Additionally, travel insurance is a must for all participants.

Travel insurance will not be reimbursed.

The currency in Lithuania is **the euro**. It's always good to have some cash near you, but Lithuania is well prepared for paying by card almost everywhere



WHAT TO PACK

WARM CLOTHES



ELECTRONICS



HYGIENE & MEDICAMENTS



PLUGS



WHAT TO BRING



October in Lithuania is already a cold month - it will probably rain a lot also. Please pack **warm clothes** and a **waterproof jacket**.

Before traveling check:
<https://www.bbc.com/weather/593116>

We will be working on a computer most of the time. Please bring a **laptop or tablet**, to be able to work on with online tools.

Please bring your own hygiene and medicaments.

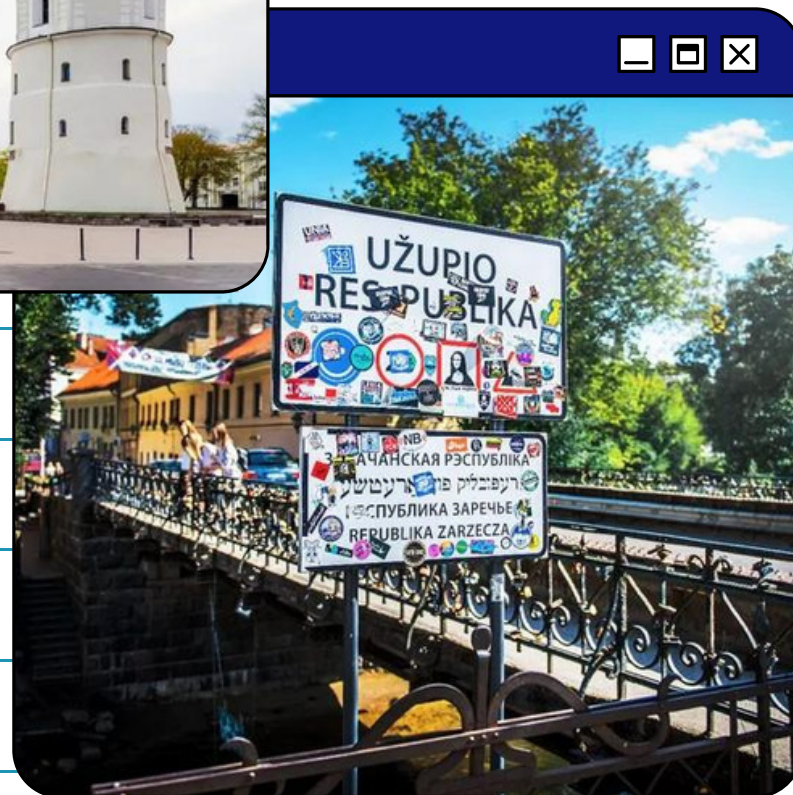
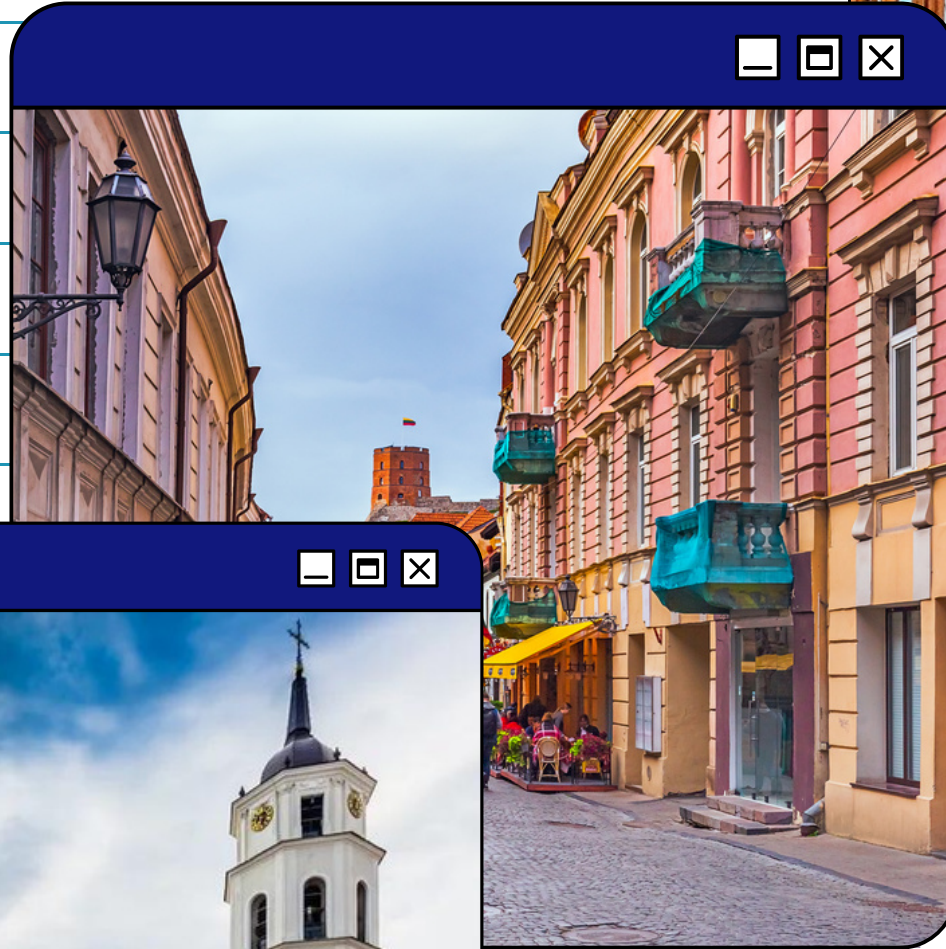
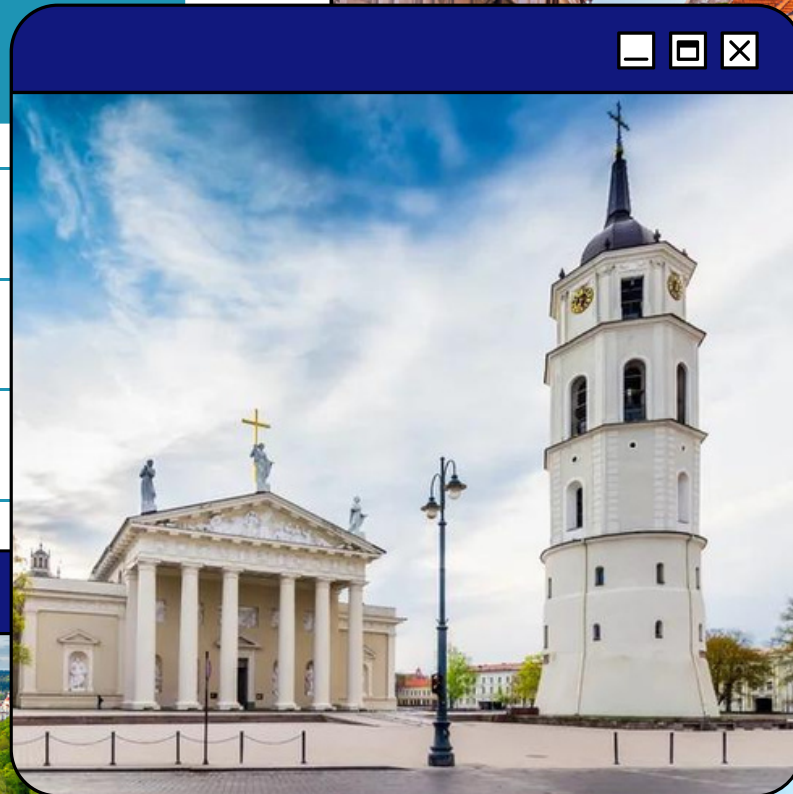
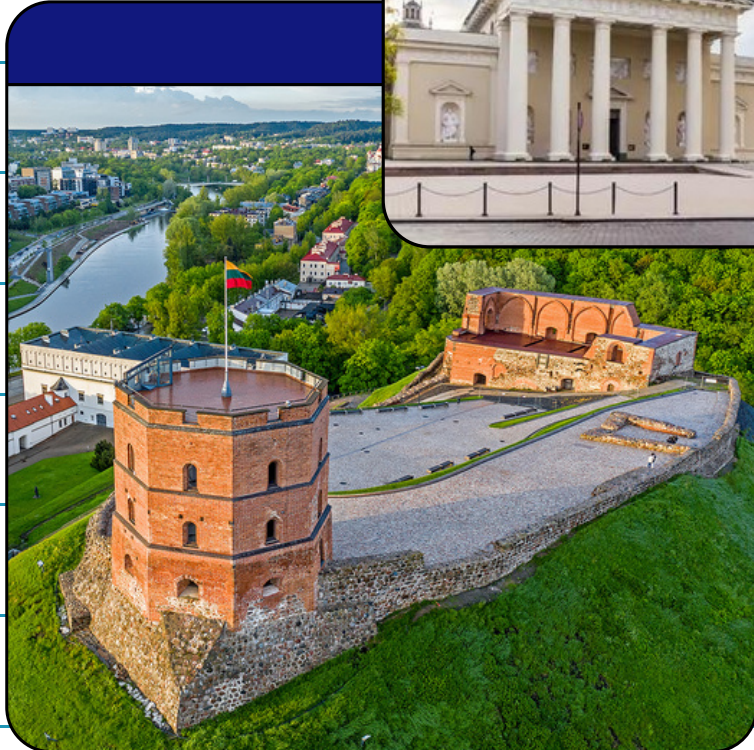
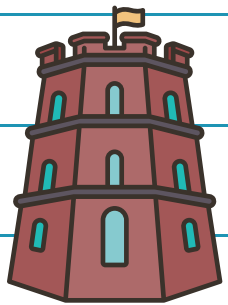
Plugs in Lithuania are the most common in Europe. They are: V230 - 50Hz





WHY LITHUANIA

24 - 31/10/2022



WHAT TO SEE IN LITHUANIA VILNIUS

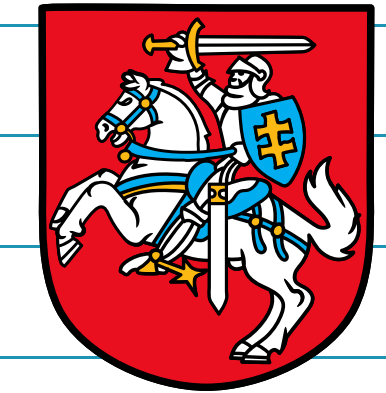
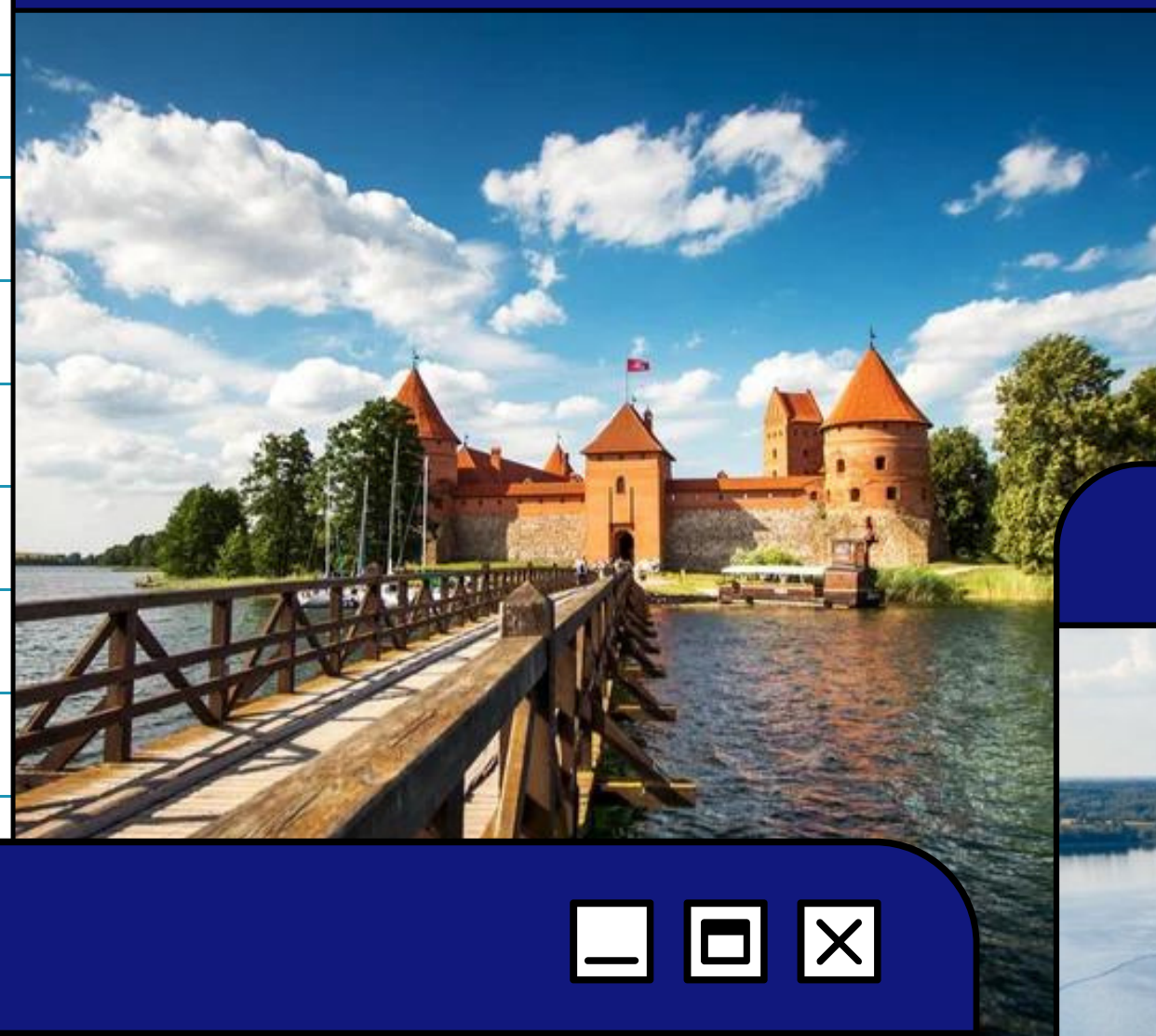
3 main reasons to visit Lithuania: beautiful nature, great people, and tasty cuisine.

Vilnius as capital can offer a lot more than you might think. After a tour of the **historical old town** with amazing architecture, you can taste a **pinky soup** and cepelinai in a traditional cuisine restaurant. We can not forget **Džiugas** - cheese you will want to take home. **Užupis** a republic in the republic - place with its own constitution, which is translated to most European languages. **Gediminas castle**, the **Hill of three crosses**, **Basilica of St. Stanislaus and St. Ladislaus** - those are just places you must see.



WHY LITHUANIA

24 - 31/10/2022



MUST SEE TRAKAI CASTLE

Trakai castle is a must to see. The magical atmosphere will just get you. Castle was built on an island which is surrounded by a lake. Close by is also a Manor house with a beautiful garden. You definitely shouldn't skip that one.



CONTACT US



umunthuprojects @ gmail.com



We are looking forward to meet you

